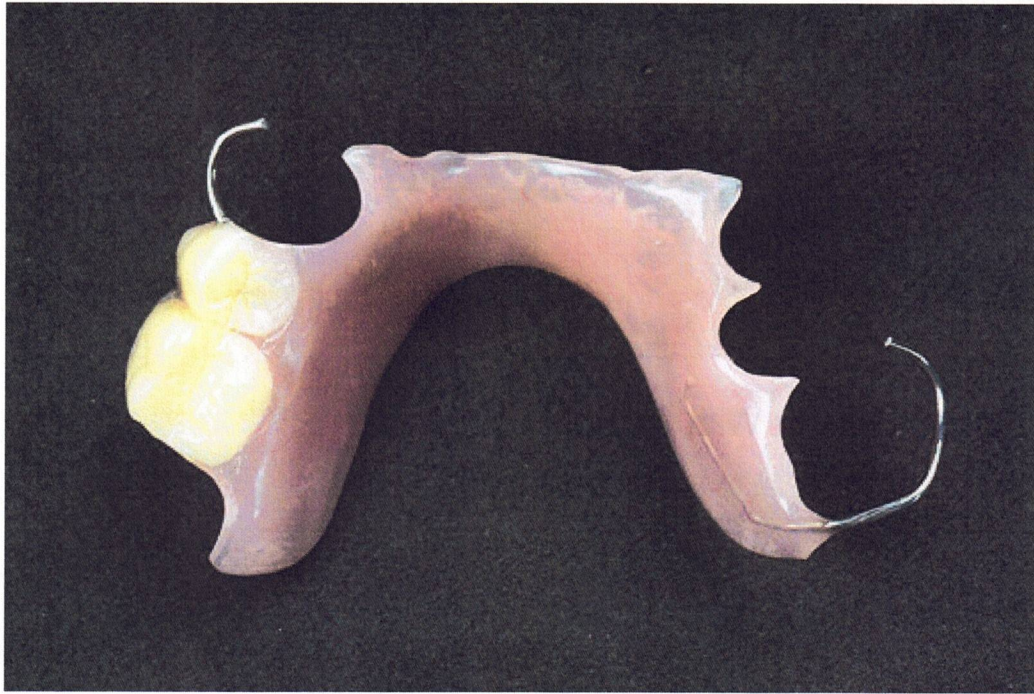


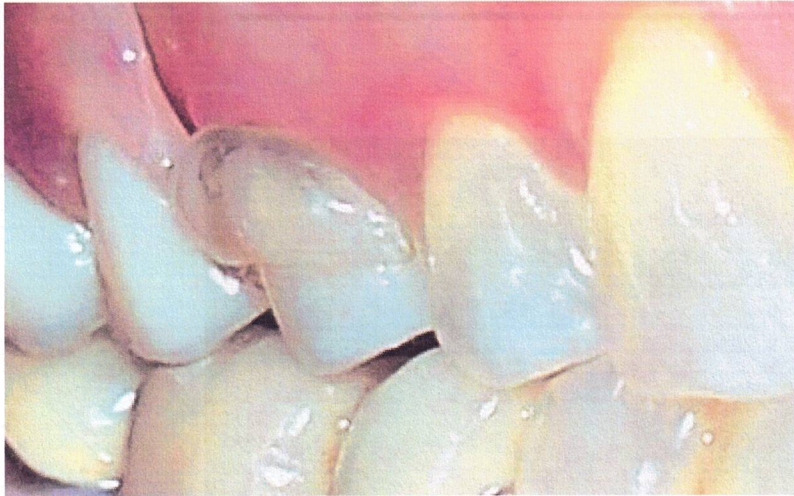
PARTIAL DENTURES



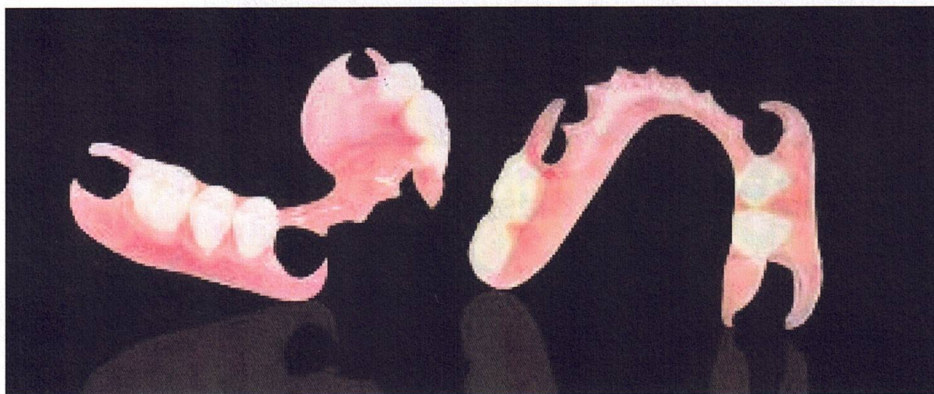
Resin Based Partial Denture With Metal Clasps



Cast Partial Denture



Resin Based Partial Denture With Clear Clasps



Flexible Partial Denture

When natural teeth are lost by accident, decay, or infection, it is sometimes necessary to replace them with a removable denture. The remaining natural teeth help hold the denture in place and share some of the chewing load. The goal of the partial denture is to preserve the remaining natural teeth. Following insertion of a partial denture, the supporting teeth will usually be somewhat sore for several days. The gums will usually be tender for some time also, as there are now loads on them to which they are not accustomed.

The key to success is your home care. It is imperative that you brush your natural teeth at least 3 times a day and use a fluoride mouthwash! If you lose additional teeth, a new denture may have to be made.

There are wires or hooks on your denture that are called "clasps". The clasps are what hold the partial to your natural teeth. You will need to remove the denture after eating. Food will get on the teeth, around the edges of the denture, and under the denture. You must keep up with your cleaning appointments and you must keep everything clean at home. Making a cast partial denture may require 4 – 5 appointments. The other types of dentures can usually be made in 2 – 3 appointments.

Problems can begin to appear such as cheek biting, soreness of the gums, and teeth can chip. This is no surprise, give us a call, we'll be happy to take a look and adjust when necessary. The denture may alter your taste sensation. It absorbs temperature and covers your gums so you won't feel the texture of food. As time passes and you become accustomed to the new teeth, you will feel that they are a part of you.

Please do not attempt to tighten the clasps yourself. They are rather fragile and can easily break.

We have done our best to provide you with well-fitted, functional, and esthetically pleasing partial denture. We feel confident that after a few weeks of adjustment to them, you will enjoy years of satisfaction and use from them. In the meantime, the following is information you need to know:

1. The first few weeks of wearing new dentures always feel strange when first placed in your mouth. Several days or even a few weeks will be required for you to feel accustomed to them.
2. You may notice an increase in saliva for 72 hours after you begin wearing your first denture. The saliva flow usually returns to normal after 72 hours.
3. Sore spots. Your mouth usually will have a few sore spots about 24 hours after using new dentures. A quick adjustment can usually eliminate them.
4. Chewing. The new bite may not feel comfortable for a period of days. We will adjust the contacting surfaces of your teeth at subsequent appointments after the denture has settled into place.
5. Cleaning the dentures and your mouth. Your partial denture can be cleaned easily by using a denture cleaner such as "**Polident Partials**". Both the partial and the natural teeth must be kept very clean daily to reduce the chance for new decay forming. Denture soaks will also help. Brush your gums with a regular toothbrush once per day to toughen and clean them. You may leave the dentures in or out of your mouth at night, depending on your preference. If they are left out of your mouth, leave them in a solution of water and mouthwash.

Your jaw bones shrink over time which can cause dentures to become loose. This is one of the main disadvantages of dentures. Because of this shrinkage, you should plan to have your dentures and oral tissues evaluated by us at least every six months. We will inform you when relining or rebasing of the dentures is necessary. Wearing ill fitting

dentures for too long without refitting can cause severe bone loss and abnormal gum growth.